

2022 PARTNERSHIP IMPACT REPORT



RESPONSE UPDATES

How Rotary has helped us
continue our programmes
in 2022

THE EVOLUTION OF OUR SHELTER

How we have adapted
our shelter support across
the years

SHELTERBOX ACROSS AFRICA

Find out more about our work in
Ethiopia, Nigeria, Mozambique,
Cameroon and Burkina Faso

ROTARY IN FOCUS

Strengthening
our partnership



ShelterBox

Rotary



ShelterBox and Rotary International are Project Partners in disaster relief.

ShelterBox is a registered charity independent of Rotary International and The Rotary Foundation. **Charity No: 1096479**

CONTENTS

2022 OVERVIEW 3

DEPLOYMENT FOCUS:

Ukraine 4

Pakistan 6

Philippines 8

IMAGES FROM THE FIELD:

Philippines 10

THE EVOLUTION OF OUR SHELTER SUPPORT 12

CASH CAN HELP COMMUNITIES RECOVER 14

GRIFAID WATER FILTER - A PILOT PROJECT IN CAMEROON 15

PROTECTING THE ENVIRONMENT AT SHELTERBOX 15

THE IMPACT OF OUR AID 16

SHELTERBOX ACROSS AFRICA 17

ROTARY ZONE INSTITUTES 18

ROTARY INTERNATIONAL CONVENTION, HOUSTON 18

ROTARY IN FOCUS 19

Thank you

FROM SANJ SRIKANTHAN
(SHELTERBOX CEO)

Now more than ever our partnership with Rotary is fundamental to what we do. The need for emergency shelter is growing every day. Over 100 million people are currently forced from their homes by disaster and conflict around the world.

The scale of our responses in 2022 reflect this, in a year where extreme weather events, as we've seen in the Philippines and Pakistan, combined with the rapidly escalating crisis in Ukraine, have created an unprecedented need for emergency shelter support across the world. ShelterBox has been well placed to respond to those needs, in part because we have been well prepared. Having large quantities of aid pre-positioned in our Cebu warehouse, along with unique, established connections with Rotary, enabled us to support 100,000 people quickly and efficiently when Typhoon Rai hit the Philippines.

When the war started in Ukraine in February, we were able to quickly arrange three separate projects, helping refugees fleeing to Moldova, as well as people staying behind in Ukraine. This year, we were also able to start a programme in Yemen – something we've been working towards for some time. All in addition to the continuation of ongoing programmes in Mozambique, Syria, Cameroon, Ethiopia, Burkina Faso and Nigeria.

To adapt to a changing world, we are continually thinking about new ways of responding to the increasing needs worldwide. We are balancing our ability to respond to long-term conflict and climate change induced disasters; and we are evolving and innovating as an organisation to influence the humanitarian sector in reducing our impact on the environment. Adaptations which include the prepositioning of aid in high-risk regions; or assisting households with cash payments so they can make their own choices about what they need to support their journey to recovery; all alongside providing our high-quality shelter materials.

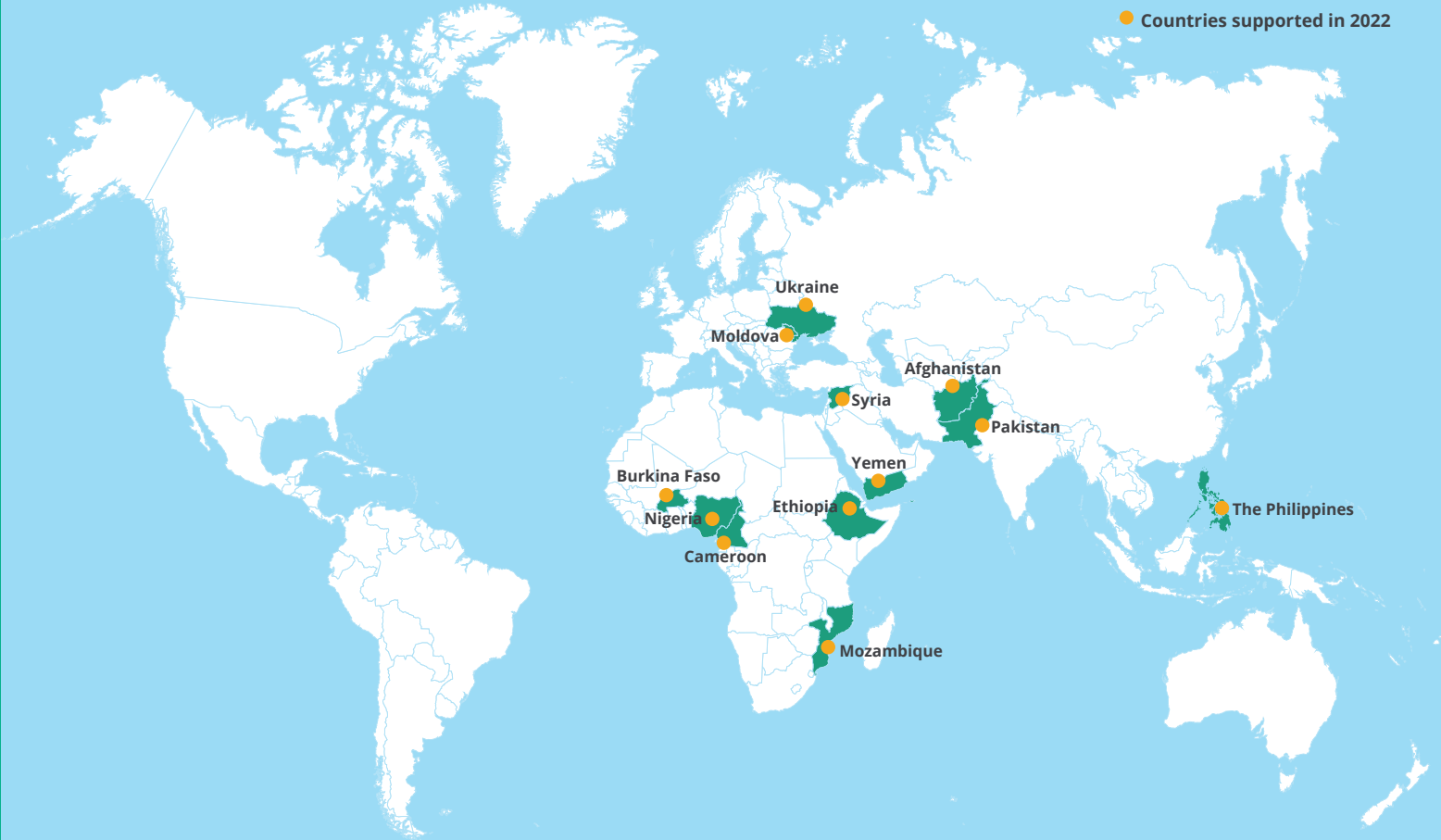
I hope that the stories in this impact report show you what a difference our partnership makes for people recovering from disaster. Rotary members have been with us every step of the way, whether that's supporting our mission through awareness and fundraising, helping us get aid into countries, or introducing us to important local government contacts. Its only thanks to our supporters and to our partnerships with Rotary and others, that we can make the necessary commitment to working with communities long-term.

SANJ SRIKANTHAN
Chief Executive



2022 OVERVIEW

Reaching communities with vital aid is only made possible with help from our partners, volunteers and global network of supporters. We have created this report to say thank you and show how this partnership of action has helped so many families rebuild their lives following disaster or conflict.



OVER
400,000
PEOPLE SUPPORTED



OVER
80,000*
FAMILIES SUPPORTED

with different combinations of emergency shelter aid, support, and essential household items

YOUR SUPPORT HAS REACHED ACROSS 22 DIFFERENT PROJECTS IN 12 DIFFERENT COUNTRIES AFTER:



TYPHOONS



FLOODING



DROUGHT



CONFLICT



EARTHQUAKE

*assuming 5 people per family

DEPLOYMENT FOCUS:
UKRAINE

On 24 Feb 2022, Russia launched a major military operation in Ukraine, representing a significant escalation of the conflict which has been ongoing in the east of the country since 2014.

By the end of 2022, close to 8 million Ukrainians have been recorded as living as refugees in countries across Europe and almost 6 million have been displaced within Ukraine. Around half the population have been affected by the war in some way and an estimated 17.7 million people are in urgent need of humanitarian assistance, an increase of 2 million since April.

The remains of Victoria's home are shrouded in snow, as winter temperatures in Ukraine reach as low as -25°C in some parts of the country.

Throughout March and April, ShelterBox teams deployed to Poland, western Ukraine, and Moldova to assess the emergency shelter needs and coordinate with other humanitarian actors, Rotary, and potential partners to inform our response. We liaised closely with Rotary members of District 2231 in Poland to coordinate information and better understand the situation. The president of the Rotary e-club of Moldova International, Luminita Gavriluta, connected the team with Rotary colleagues across Moldova and helped us make government connections in the Ministry of Labour and Social Protection in Moldova who were mandated with supporting the flow of refugees into the country.



PHASE 1 OF OUR CONTINUING RESPONSE
CONSISTED OF THREE PROJECTS

98% OF PEOPLE
THAT RECEIVED
SHELTER REPAIR
KITS WERE ABLE TO
USE THE MATERIALS
TO MAKE URGENT
REPAIRS TO
THEIR HOMES.



PROJECT 1:

For project 1 we worked with two different partners, People in Need and ReliefAid, to distribute a total of 12,000 mattresses to people living in 'collective centres' throughout western and central Ukraine.



PROJECT 2:

For project 2, with our partner, ReliefAid, we focused on supporting people within Ukraine living in buildings damaged by the conflict. We supported 6,443 families with shelter tool kits and tarpaulins along with fixings as required, as well as blankets, mattresses, water carriers, buckets, solar lights, and hygiene kits.

Vasilina and Julia worry about surviving the winter in Ukraine without heating or power.



PROJECT 3:

With our partner, ACTED, Project 3 supported refugees arriving at the border in Moldova with a portable assistance package. This included hygiene items and cash payments, allowing displaced people to meet their immediate needs and make their own choices about what they needed to support their journey to recovery.



WE SUPPLIED
19,000 PEOPLE
WITH HYGIENE KITS



6,087 PEOPLE RECEIVED
MULTI-PURPOSE CASH
ASSISTANCE

In the second half of 2022, the number of refugees in need of shelter assistance across European borders reduced, whilst the needs within Ukraine have remained widespread. Millions who had been uprooted during the first few months of war attempted to return to their home area. But with Ukraine now in the grip of winter, heavy snowfalls and temperatures dropping well below zero, mean the cold presents a new threat.

Support by humanitarian aid organisations has been stepped up but needs and targets exceed current capacity and recent attacks on power stations are only exacerbating the crisis. Therefore, projects 4 and 5 are fully focused on supporting people within Ukraine.

Project 4 was initially intended to provide 2,000 families in rural and suburban communities with emergency kits, allowing them to make repairs to damaged houses that they are still living in, in addition to a selection of winter specific aid items, including winter clothing, blankets, solar lights, stoves, and firewood. However, due to the shifting context, challenges in access due to the winter conditions, and continued attacks on infrastructure, we have had to adapt our approach.

Some families who had intended to stay in their houses now find that without power, life is intolerable, and have made the difficult decision to move. We are therefore prioritising the distribution of winter clothing and stoves in Kyiv and Chernihiv oblasts. We have decided to hold back the majority of shelter items for distribution in a third location, likely recaptured areas of Kharkiv, where the gap in provision of these materials appears greater.

With the recent escalation on attacks on energy infrastructure, we decided to run a rapid winter response (project 5)

simultaneously with project 4. The aid package focuses on winter aid items that will improve living conditions through the coldest months. It includes blankets, sleeping bags, winter clothing, stoves, lights, and water carriers; and will support around 6,000 families in the following oblasts: Lviv, Khmelnytskyi, Vinnytsia, Kyiv, Chernihiv, Donetsk (Ukraine controlled areas only) and Mykolaiv.

We also hold monthly calls with Rotary colleagues in Ukraine: Sergii Zavadskyi and Mykola Stebljanko from District 2232 who, along with Rotary members across the country, have been working tirelessly to support local communities devastated by the conflict. We exchange information and latest developments on respective projects with the aim to support the most vulnerable in the region.



Dina was still in her apartment block on the edge of Kyiv when the first missile struck her building. Daily missile attacks caused part of her building to collapse. She was evacuated, but was the first resident to return home a month later to no water, gas or electricity. She received ShelterBox aid to help her survive in her apartment. When asked why she wanted to return home, she said 'we just wanted to come home. Home is warming. There is nothing like it'.

DEPLOYMENT FOCUS:
PAKISTAN

From mid-June Pakistan was overwhelmed by severe monsoon rains and flooding affecting areas in both the north and south of the country.

Pakistan authorities reported a 150% increase in rainfall throughout 2022, compared with the 30-year average. Waterways that feed the main Indus River that runs through Pakistan burst their banks, flooding large areas of dry land and leaving people in desperate need of water, food, medicine, and shelter.

Over 110 districts were declared ‘calamity hit’ by the government and many have called the flooding a climate induced humanitarian crisis of epic proportions. It is estimated that around 33 million people have been affected by the flooding (15% of the total population of Pakistan); more than 1,200 people have lost their lives and almost 1 million people have been displaced.

Since our first response in 2001, we have responded in Pakistan multiple times, many of which have been supported by Rotary, including the 2005 Kashmir earthquake. In 2010 we supported thousands of the worst affected families by the most severe flooding to hit the country in 80 years. Rotary supported us with logistical and travel expertise, aiding permissions and access to hard to reach areas, which they did once again following the 2008 earthquake in the Baluchistan province of southwestern Pakistan.

“*The scale is unthinkable, yet a reality for 33 million people in Pakistan and the water in many places still hasn’t receded. Through no fault of its own, Pakistan is one of the most vulnerable countries in the world to the climate crisis.*”

- Sanj Srikanthan

Sanj Srikanthan, ShelterBox CEO, visiting affected communities in the Sindh region.



Observational data that we have received from communities has indicated that people are very satisfied with the quality of our aid, particularly the Grifaid water filters, which were designed as part of a Rotary project and are now being distributed as part of our aid package (read more on the Grifaid water filter on page 15).

In early September, we sent an assessment team to Pakistan to work on plans for an initial emergency response, with the main consideration being speed and efficiency, given the enormous scale of humanitarian need. Rotary offered their support, through help with travel arrangements, and introduced the team to important local contacts and potential partners.

In collaboration with our partner, Islamic Relief Worldwide (IRW), and implementing partner, Islamic Relief Pakistan (IRP), we supported 1,200 of the most vulnerable families in four locations across the worst affected provinces of Sindh and Baluchistan. The emergency shelter package contained a ShelterBox relief tent, tarpaulins and rope, and was distributed in addition to a NFI (non-food item) package to support the same households with water filters, water carriers, blankets, mattresses, mosquito nets and solar lights.

Once we were able to ascertain the true extent of the affected population, we began to work on details for scaling up the emergency response with a mid to longer term response to focus on the self-recovery process of 5,000 families in Sindh and Baluchistan (a proportion of which will have received emergency aid in the initial response). As the waters receded and communities have been able to start returning home, multi-purpose cash grants of approximately £92 have been given to contribute to families’ ability to self-recover on their own terms.

We are currently working on project 3 which will focus on the recovery phase, and aims to provide families with an improved, more durable, and longer-lasting shelter solution, allowing them better protection in case of future flooding. We are working on selecting a shelter design and aiming to finalise the project plans and sign the project agreement with our partner late January 2023 for a project start in February.



ShelterBox teams worked with our partner, Islamic Relief Pakistan (IRP), to deliver training on the use of our equipment and tents which was then cascaded down so the communities could share the training with others receiving the aid.

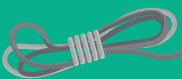


Distributions in the Sindh region of Pakistan.



PROJECT 1:

SUPPORTED 1,200 FAMILIES IN SOME OF THE WORST AFFECTED AREAS WITH AN EMERGENCY AID PACKAGE COMPRISED OF:



rope



mattresses & ground mats



jerry cans



tents



mosquito nets



water filters & buckets



solar lights



tarpaulins



blankets



kitchen sets



DEPLOYMENT FOCUS: PHILIPPINES

The Philippines is one of the worst disaster-affected countries in the world, and since 2004, ShelterBox has responded more than 30 times. Rotary have assisted us on every single deployment since 2004, but when Typhoon Rai hit in December 2021, Rotary was more instrumental than ever in helping us get support to the people who needed it most.

As soon as the storm had subsided, ShelterBox Operations Philippines (SBOP) carried out a rapid needs assessment and identified three municipalities in southern Cebu that would most benefit from our support. Just two weeks after the typhoon had made landfall, with the support of the Rotary Club of Cebu, we responded with project 1 and were able to begin distributions of emergency shelter items in Sibonga and Argao using prepositioned aid from our warehouse in Cebu. Distributions in Dalaguete commenced shortly after the Argao distributions were complete.

Despite logistical challenges presented by Covid restrictions, with the support of the Rotary Club of Ubay and our partner for project 2, Humanity & Inclusion, in February we were able to begin distributions to 11 municipalities in Bohol. Bohol being a region which was badly affected by the typhoon and was receiving little international support at the time.

The hands-on engagement of Rotary in this response was momentous, building on the significant engagement in previous responses. The Rotary Club of Cebu paid for trucks to transport aid from our warehouse in Cebu to distribution sites in southern Cebu, and donated CGI (corrugated galvanised iron sheeting), commonly used as roofing material in the Philippines, which was delivered onsite free of charge.

Members of the Rotary Club of Cebu and District 3860 assisted first-hand in distributions and in the demonstration of aid items to beneficiaries. The Rotary Club of Cebu also connected us with the Cebu Contractors Association (CCA) who donated additional tools to support the aid package provided to families in southern Cebu and supported SBOP in researching local suppliers for aid items.

Super Typhoon Rai, known locally as Odette, was the strongest storm to hit the Philippines in 2021.



HIGH WINDSPEEDS OF 195 KPH CAUSED WIDESPREAD DEVASTATION TO 6 OUT OF 17 REGIONS ACROSS THE ARCHIPELAGO; SEVERELY AFFECTING AROUND 9.9 MILLION PEOPLE, DAMAGING 2.1 MILLION HOMES AND DISPLACING OVER HALF A MILLION PEOPLE.

As the storm made landfall, tens of thousands of people evacuated to collective centres or to stay with friends and family, leaving behind their belongings and livelihoods. When the storm subsided and people returned to their homes to assess the damage, some were able to salvage what was left to construct makeshift shelters.

In Bohol, District Governor, Anna Bugamat, of District 3860 linked SBOP with clubs in Bohol, including the Rotary Club of Ubay who then mobilised members of Rotaract to assist with distributions, validating and registering beneficiaries; and conducting exit interviews at the close of the response to assist with post-distribution monitoring. Rob Simpson, of the Rotary Club of Tagbilaran assisted SBOP in researching financial institutions in Tagbilaran and Panglao to enable distribution of cash payments (read more on how cash can help communities recover on page 14). Rotarian, Archie Gamboa, from the Rotary Club of Downtown Davao, District 3860, arranged introductions with important contacts from the Department of Social Welfare and Development and the Department of Finance to arrange for the tax and duty-free importation of aid items into Bohol. Archie also personally assisted in distributions in both Bohol and Cebu and provided a piece to camera for ShelterBox social media.

Across the two provinces of Bohol and Cebu, with Rotary's crucial assistance, we were able to provide support to over 100,000 people, more than 20,000 families, with a variety of aid packages which included solar lights, tarpaulins, rope and shelter kits. This includes cash assistance provided for 5,000 families in Bohol.

Moises and his family received CGI and tools, which he used to start rebuilding his home.



Members of the Rotary Club of Cebu assisting with distributions.



SINCE 2004 WE HAVE RESPONDED MORE THAN 30 TIMES IN THE PHILIPPINES TO:



TYPHOONS



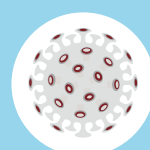
FLOODS



EARTHQUAKES



CONFLICTS



PANDEMIC RESPONSES

IMAGES FROM THE FIELD: PHILIPPINES

THE MAJORITY
OF PEOPLE WE
SUPPORTED IN CEBU
(82%) WERE ABLE TO
RETURN TO THEIR
LAND WITHIN ONE
MONTH OF RECEIVING
SHELTERBOX AID.



▲ (From left to right) Mary Lou, Alice, Rosalinda, Thelma and Julita. These women are part of a cooperative called SUMBANAN, which means 'Organisation of families of farmers helping each other'. They make durable, waterproof bags that can hold household items like blankets, solar lights and water filters which can easily be carried home. So far, the women have produced almost 8,000 bags for ShelterBox which have replaced plastic ShelterBoxes that were previously distributed alongside shelter kits.

Monalyn and her family went to live with her mother after her home was badly damaged in the typhoon. With the tarpaulins and tools she received they were able to make the necessary repairs to the house to enable them to return home and start rebuilding.



Eleuterio and his wife hid under the table when the storm hit. Their home was destroyed, but the table remained intact. They received tarpaulins and tools to make temporary repairs to their home, so they could remain on the land whilst they build a new house.



▲ Rodelyn's home was completely destroyed by super Typhoon Rai. She managed to salvage some scrap materials, and together with the tools and tarpaulin she received, the family were able to construct a temporary shelter. They live in the shelter whilst they save money to build a new home and set up a small shop next door to provide them with an income.

Susana lives with her granddaughter in Dalaguete, she received the tarpaulin and rope package along with a solar light, which they find useful when there is no electricity at night.



IN BOHOL,
ALMOST ALL
RECIPIENTS (99%)
WERE SATISFIED
OR VERY SATISFIED
WITH THE
MATERIALS THEY
RECEIVED.

Fidela lives with her family in Sibonga, in southern Cebu. Her home was completely destroyed by Typhoon Rai which was the strongest typhoon she can ever remember.



ACROSS THE TWO PROVINCES OF BOHOL AND CEBU, WE PROVIDED SUPPORT TO MORE THAN 100,000 PEOPLE, THAT'S OVER 20,000 FAMILIES, WITH AID INCLUDING:



shelter kits



solar lights



tarpaulins



rope



cash assistance

THE EVOLUTION OF OUR SHELTER SUPPORT

At ShelterBox, emergency shelter is at the heart of what we do. We are constantly learning and adapting the support we offer to best meet the needs of people affected by disaster and conflict.

Over our 22-year history, we have evolved to work with affected populations in a wide range of ways, offering more combinations of support and aid to better meet the needs of the people we serve.



ShelterBox was founded by members of the Helston-Lizard Rotary Club who wanted to help people who were left with nothing after disaster. They selected a sturdy green box, which could fit a family-sized tent, sleeping bags and some household items.

UN FAMILY TENT

In Syria, ShelterBox began to use the UN family tent which was designed for protracted responses, where people are having to settle for longer periods of time. The tents were bigger to fit larger families, and therefore didn't fit into our ShelterBox. As we developed our expertise and range of shelter solutions, we started to find that many of these solutions did not require the box.



SYRIA WINTERISATION PROJECTS

With winter conditions in Syria dropping to minus temperatures, we piloted a specialised project providing winter clothing for families in displacement camps. The winter aid package has been enhanced every year since, with the addition of insulated baby grows in 2017 and the addition of socks and boots in 2021.



CASH ASSISTANCE PILOT PROJECT

In consultation with communities, we provided small amounts of cash to families in the aftermath of Typhoon Tisoy in the Philippines in 2020, alongside our aid package. It was thought that cash could be helpful for families to buy the materials needed to help repair or rebuild homes that we weren't able to deliver directly, like wood, and to pay for specialised labour.



SAHELIAN TENT

The Sahelian Tent is designed for the climate in Burkina Faso, characterised by extreme temperatures, with fluctuations between prolonged drought and heavy rainfall. Tarpaulins are stretched over a frame of metal supports and PVC tubing; and large openings allow for cross-ventilation. The design is based on a shelter used by the Tuareg people of the Sahara.



BAMA SHELTER

Our partners in Nigeria, ACTED, worked with trained carpenters to build shelters more suited to local customs and contexts. The Bama shelters are 18m sq. and house up to five people. There is an internal partition to provide privacy or to allow for smaller families to live together.



2000

2001

2013

2014

2015

2018

2020

2021

2022



From our first response supporting communities after the 2001 earthquake in Gujarat, India, we became known for our domed tent which was developed with the tent experts at Vango.

WE CAN FIT UP TO

3X

THE NUMBER OF SHELTER KITS INTO OUR MODE OF TRANSPORTATION COMPARED TO BOXES.

This saves us money and enables us to support more people, whilst also decreasing our contribution to carbon emissions.



SHELTER KITS

When responding to the flooding in Paraguay in 2014, we realised that the tent wasn't suitable for an urban environment where space was limited. Tarpaulins and shelter tool kits became the best solution for making repairs to homes that were damaged but not destroyed.



SHELTERBOX OPERATIONS PHILIPPINES (SBOP) WAS FORMED

Through consultation with the Philippines government, we started supplying CGI (Corrugated Galvanised Iron sheeting) as part of the aid package, which is a commonly used roofing material for homes in the Philippines. With the formation of SBOP, we had access to warehousing which allowed for pre-positioning of aid and space for storage of CGI.



TENT LEVELLING

In 2021, we piloted a project in displacement camps in Syria, where people caught up in protracted crises are living in tents for long periods of time. Heavy rains were causing localised flooding in camp, with water saturating the tents. Raised tent bases were created off the ground with a surround of bricks to keep rainwater from entering the tents. We also expanded the tent levelling project into 2022.

FIRE EXTINGUISHERS

In April 2022, our partner in Yemen, BCHR, proposed that we include fire extinguishers as part of the aid package. Fire outbreaks were commonplace in camps and several people had been killed. Powder fire extinguishers were bought locally by our partners and training was given to communities on how to use them.



Shelter is not one size fits all – our homes are as unique as we are. That is why we have had to take a practical and flexible approach to adapt our shelter solutions, providing the best support for communities depending on the situation.

CASH CAN HELP COMMUNITIES RECOVER

Vladyslav and Vlada are a young couple from Ukraine. They fled to Moldova with their families when the conflict started, carrying with them only a few clothes and documents. They received cash assistance from ShelterBox which they used to buy food and other things that they needed. Before, they had plans to marry, now their only hope is that the conflict will end, and they can return home.

At ShelterBox we are constantly seeking to develop and learn how we can do more to help communities recover after conflict or disaster. All of our work is based on listening to communities, to understand how we can best provide the right support and create the most impact.

The journey to self-recovery isn't just about shelter – that's just the start. Through cash assistance we can provide the means to support local markets and help kickstart local economies as suppliers and tradespeople can start doing business again. Often it isn't just homes that are lost or left behind following disaster and conflict, but livelihoods too. Perhaps most importantly, providing cash helps people feel a sense of dignity and control.

Following the success of pilot projects in the Philippines and Cameroon, we have also provided cash as part of a support package to Ukrainian refugees crossing the border into Moldova, so that they could pay for things like food, transport

or accommodation. We have also been providing cash assistance to families affected by the flooding in Pakistan so that they can buy what they need to help them in their journey of recovery.

Cash is only one of many support options, but like many other organisations, ShelterBox will likely be providing cash assistance in the future, in complement to our shelter and aid packages. We've learned from our own trials and global best practice, so we know it can help communities in their recovery. Just like our supporters, we're here to make lives better after a disaster – and that's why we're now adding this approach to our work.

“By providing cash, people can spend the money on things like local timber, carpenters and building materials, but most importantly it enables people to make their own choice

- Dave Ray, Technical Shelter Lead at ShelterBox.

GRIFAID WATER FILTER - A PILOT PROJECT IN CAMEROON

The Grifaid water filter is manufactured by The Safe Water Trust Ltd (SWT), a not-for-profit company which is the outcome of a Rotary project supported by the Rotary Club of Cleadon and District in the UK.

Providing clean water, sanitation and hygiene is a core area of focus for Rotary and for ShelterBox. When people have access to clean water and sanitation, waterborne diseases decrease, children stay healthy, and mothers and children can spend less time collecting water and more time with their families or focusing on education.

Building on a long history in involvement in humanitarian aid projects, Rotary District 1030 in the UK had been donating locally manufactured water filters to international NGOs. On appeal for expertise, engineer and Rotarian John Griffith and his friends successfully created new filter designs which met the requirements for a sustainable and environmentally friendly household water treatment solution.

The new water filter was piloted in Cameroon throughout 2021. Whilst it met our criteria, we needed to test it ourselves before committing to the product. It's now being distributed as part of our aid package to people affected by the flooding in Pakistan.

“The design and mechanism is unlike anything we have seen from other NGOs. When the flooding happened, the water was contaminated and our children got sick. Now we are able to drink safe and clean water. We are very happy. We were taught how to use the filter and how to clean it.

- Pari, Mirpur Khas, Pakistan



ShelterBox.org



PROTECTING THE ENVIRONMENT AT SHELTERBOX

Through our work we see first hand the impact of the changing climate and increasingly extreme weather patterns and events on communities around the world, most of whom contribute least to the problem.

We have made a strategic commitment to minimise our environmental impact through reducing problem plastic in our work and by becoming an environmentally neutral organisation, aiming to achieve net zero emissions by 2027.

When Kenya implemented a ban on single use plastics in 2017, it became impossible for us to ship our essential relief items into the country.

Similar policies were also being introduced in other countries where we work, and our experience during the Kenya response made eliminating single use plastics from our aid packaging a high priority for us.

Despite being a relatively small organization, with environmental considerations being a priority for our volunteers and staff, we were able to implement permanent changes to our aid packaging, which has had a resoundingly positive impact on our sustainability goals.

We've removed a quarter of a million pieces of non-essential plastic from our aid items since 2019.

The steps we took are replicable and achievable measures, and we are leading the way in the humanitarian sector in reducing plastic waste. Imagine the scale of positive environmental impact if every humanitarian organisation took these steps!

Read our report on how we are influencing the sector



THE IMPACT OF OUR AID

More than eight years of armed conflict in Yemen has caused tens of thousands of civilian casualties, displaced millions, destroyed the economy and disrupted basic services. It remains one of the world's largest humanitarian crises and aid operations.

ShelterBox completed the first project in Yemen this year, supporting 1,350 internally displaced families with one of two packages; each containing blankets and household items in addition to either a UN family tent, or a set of tarpaulins and rope.

Following our response, our partner, BCHR (Benevolence Coalition for Humanitarian Relief), gathered data to understand how families had benefitted from our aid. This is how the communities responded in accordance with our organisational themes:



Increased protection from extreme weather and environmental conditions – 82%



More access to household privacy and improved dignity – 98%



Improved feelings of protection and physical safety – 92%



Ability to return to family routines with more independence – 93%



Increased protection from mosquitoes – 99%



80% OF THE RESPONDENTS REPORTED INCREASED ACCESS TO SAFE DRINKING WATER

SHELTERBOX ACROSS AFRICA

With all eyes on Ukraine in 2022, here's a look at what support from Rotary helped us to achieve for communities affected by violent conflict and climate change across Africa this year.

WOMEN AND CHILDREN ACCOUNT FOR 75% OF THE WORLD'S REFUGEES AND DISPLACED PEOPLE



CAMEROON

CONFLICT

Project 10 supported 6,278 families with a range of emergency transitional and durable shelter solutions for refugees and internally displaced people (IDPs), plus household items. Project 11 aims to support 9,800 families with a larger range and more specific set of aid packages to affected people in the far north. Distributions began in December.



MOZAMBIQUE

CONFLICT

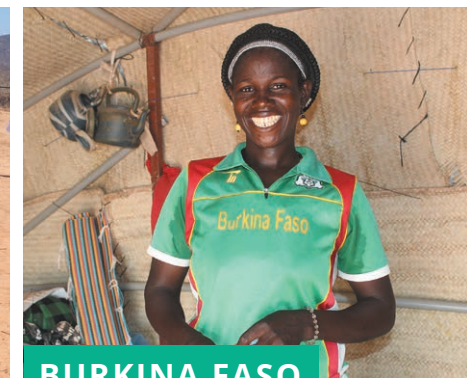
With our partner, CARE, project 1 supported 3,000 families with shelter and household items. 500 vulnerable families also received additional support (from trained volunteers) in constructing their shelter. Project 2 aims to support the urgent needs of 6,000 vulnerable displaced families with shelter and household items. Distributions began in November.



ETHIOPIA

CONFLICT/DROUGHT

Project 5 is a 12 month project running through to February 2023, and aims to support 12,000 of the most vulnerable displaced families. Distribution cycle 3 is currently focused on supporting 4,000 families with vital aid items in the Tigray region who have fled the conflict.



BURKINA FASO

CONFLICT

Project 4 supported 1,000 newly displaced families with the construction of a more durable emergency shelter in the form of the locally known 'Sahelian tent'. We are now working on a proposal for project 5.



NIGERIA

CONFLICT

Project 6 supported 1,000 families with the construction of robust 'Bama' shelters and household items.

Find out more about ShelterBox's current responses on our website www.shelterbox.org/where-we-work/

OR scan me





ROTARY ZONE INSTITUTES

ShelterBox was present at Rotary's Zone Institute in Reykjavik, Basel and most recently Limassol in November where Alex Youlten, Rotary Partnership Manager, represented ShelterBox in a panel discussion on 'Promoting Partnerships'.

We were delighted to attend this year's All Africa Zone Institute in Cote d'Ivoire in September. ShelterBox CEO, Sanj Srikanthan, and Regional Director for West and Central Africa, Anna Dixie, enjoyed connecting with Rotary members from across Africa. They gave a presentation about our work in Africa and how our partnership with Rotary is vital to support our projects in the region.

Top image: Alex Orme, Head of International Giving with Mark Maloney, Past RI President, at Basel Zone institute.

Left image: Left to right - Yinka Babalola, Past RI Vice President; Anna Dixie, ShelterBox Regional Director for West & Central Africa; DG Manuela (Nela) Matambo, and ShelterBox CEO, Sanj Srikanthan.



ROTARY INTERNATIONAL CONVENTION, HOUSTON

This year was the first time Rotary International was able to hold their annual convention in person since the pandemic began and ShelterBox was delighted to be able to take part.

Sanj Srikanthan delivered a keynote speech at both the Presidential Peace Conference and at the main Convention. In his keynote speech Sanj said: "Rotary has been beside us on our journey from day one and we are reminded of the significance of the partnership each time we mobilise."

ShelterBox also ran two Breakout sessions and had a display booth in the 'House of Friendship' where we had many great conversations with Rotary members from across our global community of supporters and made new connections with networks around the world. Looking towards 2023, the partnership proves to be stronger than ever.



WATCH THE PARTNERSHIP VIDEO HERE

ROTARY IN FOCUS



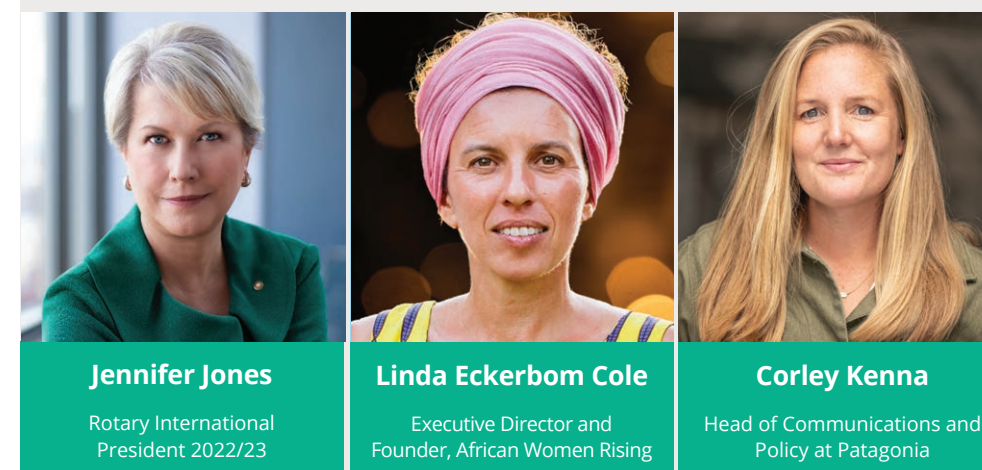
© Martin Klein, past Governor, District 1940

THE TRAIN OF LOVE (GERMANY)

ShelterBox Germany, alongside Rotary members from District 1940, took part in the 'Train of Love' demonstration in Berlin in August. The 'train' is an opportunity to unite people from Berlin in support for non-profit organisations and projects and increase awareness for the causes that they represent.

INTERNATIONAL WOMEN'S DAY: WOMEN OF ACTION

International Women's Day on March 8 marks a call to action for accelerating women's equality and celebrating their achievements around the world. ShelterBox USA hosted a virtual panel discussion on female leadership in the face of climate change. Kerri Murray, President of ShelterBox USA was joined by inspirational female leaders:



Jennifer Jones

Rotary International President 2022/23

Linda Eckerbom Cole

Executive Director and Founder, African Women Rising

Corley Kenna

Head of Communications and Policy at Patagonia

YOU CAN WATCH THE FULL PANEL HERE

OR scan me



THE BIG SLEEP-OUT

In July, Sanj Srikanthan, ShelterBox CEO, and Gordon McNally, Rotary International President Elect, camped out in a ShelterBox tent at the Border Union Show, a traditional farming show in Scotland, to raise awareness on how changing climate is driving displacement around the world.

ShelterBox Chief Executive, Sanj Srikanthan says: "The changing climate is making weather events more severe and that in turn will make the planet more unpredictable as people vie for natural resources and flee across borders. Whilst we cannot solve conflicts or work on climate change reduction by ourselves, we can raise the voices of those affected by it."

ShelterBox research, supported by Professor Andrew Collins at Northumbria University, suggests that 167 million homes could be lost to climate change disasters in the next 20 years, which is equivalent to every home in the US.

Rotary International President Elect, Gordon McNally says: "Rotary is delighted to join with our partners at ShelterBox in raising awareness about the increasingly devastating effects of climate change worldwide. Environmental disasters are a rising threat to world peace. With this sleep out we're keen to highlight the increasing numbers of displaced people across the world and signify how by working together we can make a difference to people who have had their lives abruptly disrupted."



Sanj Srikanthan, ShelterBox CEO (left) and Gordon McNally RI President Elect (right)



STRENGTHENING OUR PARTNERSHIP

Building on the solid foundations of the last 22 years, this year we launched our new strategy that will see ShelterBox become even more focused on the impact emergency shelter can have for people after disaster and conflict. In partnership with Rotary and others, we will:

DO MORE

Scale up to meet humanitarian need

DO IT WELL

Innovate to improve quality of shelter assistance

DO IT TOGETHER

Address power imbalances in the global shelter system

Right now, we are once again looking to our partnership with Rotary to support more families who have lost their homes after Tropical Cyclone Nalgae hit the Philippines in late October and we are expecting distributions to start in our first project supporting drought affected communities in Somalia in the early part of 2023.

Each year, our global partnership with Rotary helps us to go further, support more people, and access areas that would otherwise be impossible to reach. Thank you.

“

Rotary and ShelterBox will continue to collaborate, better supporting communities in need by improving preparedness, and prepositioning aid in areas prone to disaster.

- John Hewko,
Rotary International General Secretary and CEO.

Keep up to date with current programmes on our website.



ShelterBox

Rotary



ShelterBox and Rotary International are Project Partners in disaster relief.

ShelterBox is a registered charity independent of Rotary International and The Rotary Foundation. **Charity No: 1096479**